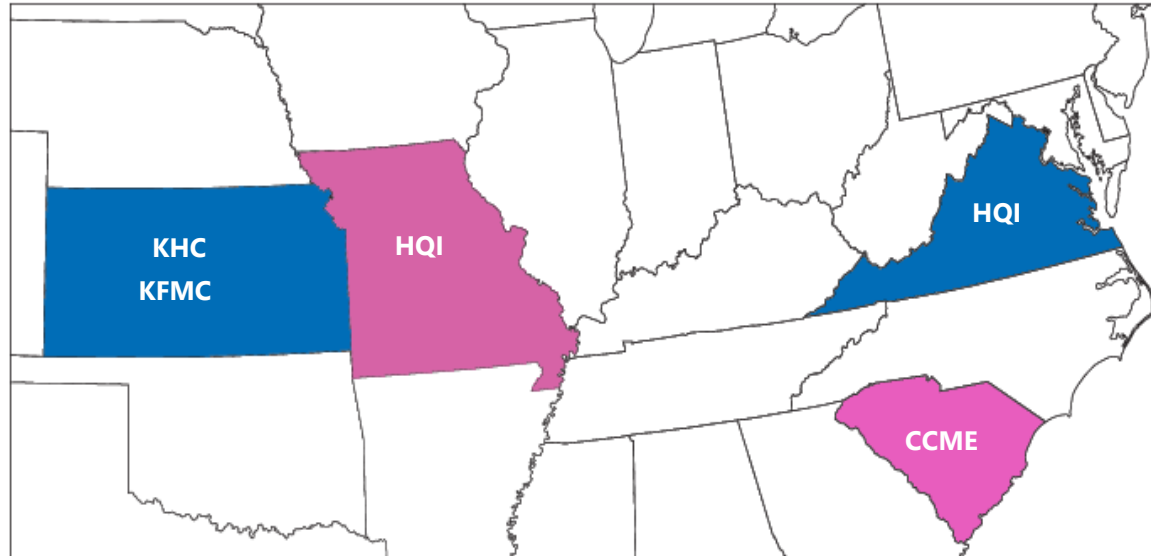


Vital Vaccines:

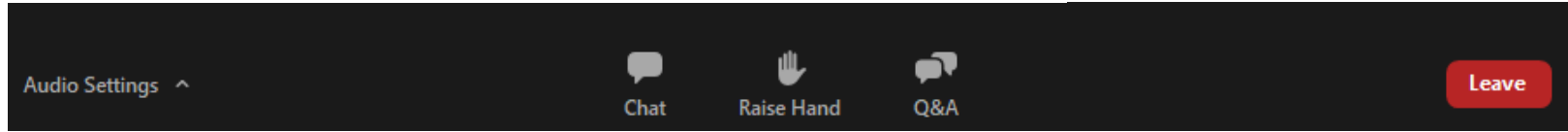
Highlighting the Important Role of Vaccines and Vaccine Champions in Wellness

8/9/2022

Health Quality Innovation Network



Logistics – Zoom Webinar



To ask a question, click on the **Q&A** icon.

Raise your hand if you want to verbally ask a question.

Resources from today's session will be posted in **Chat**.

You may adjust your audio by clicking **Audio Settings**.

You have been automatically muted with video turned off.

Your Team



**Allison Spangler,
BSN, RN, RAC-CT, QCP**
Quality Improvement
Advisor



**Cindy Warriner,
BS, RPh, CDCES**
Senior Consultant
Pharmacist



**Mary Locklin,
MSN, RN, CIC**
Senior Quality Improvement
Advisor-Infection Prevention



**Laura Finch,
MS, GNP, RN**
HQIN Consultant

Goals for this Series:

- Assist attendees in gaining knowledge related to updates associated with COVID-19 vaccines and boosters
- Assist attendees in meeting CMS regulatory expectations
- Share other important vaccination information to assist in keeping residents and staff as healthy as possible



The content presented in this webinar is based on COVID-19 information and guidance as of the date of this session.



Learning Objectives

- Review vaccines for people living in nursing homes
- Apply updated knowledge to plan for co-administering vaccinations during booster clinics
- Utilize case studies to review the benefits of the COVID-19 booster and other vaccinations for staff and residents of nursing homes



Friendly Reminder: Update Your Facility Signage

Everyone should get a flu vaccine every year before the end of October, if possible.

Adults need a Td vaccine every ten years.

Healthy adults 50 years and older should get shingles vaccine.

Adults 65 years or older need one dose of pneumococcal conjugate vaccine followed by one dose of pneumococcal polysaccharide vaccine.

Adults younger than 65 years who have certain health conditions like heart disease, diabetes, cancer, or HIV should also get one or both of these vaccines.

Adults may need other vaccines based on health conditions, job, lifestyle, or travel habits.



Hmmm...
what's
missing?

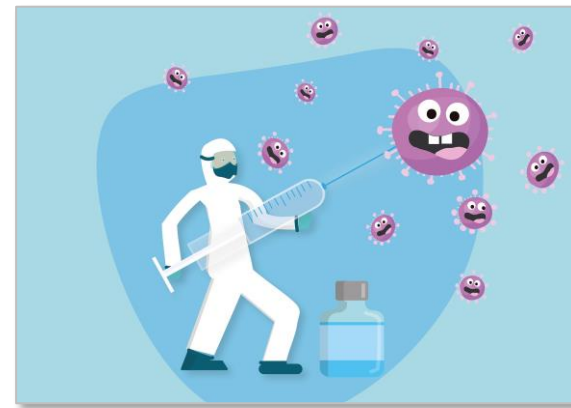
Case Study 1

May 1, 2022: Mrs. Seema Patel, 65, in Kansas City, is a new admission with a hip fracture. She came from the hospital; prior to that she was living at home. She is unsure if she will go back home, to an assisted living or remain in nursing care.

Her admission paperwork notes that she had her first and second Pfizer vaccinations in May of 2021 and a booster in November with her influenza vaccine.

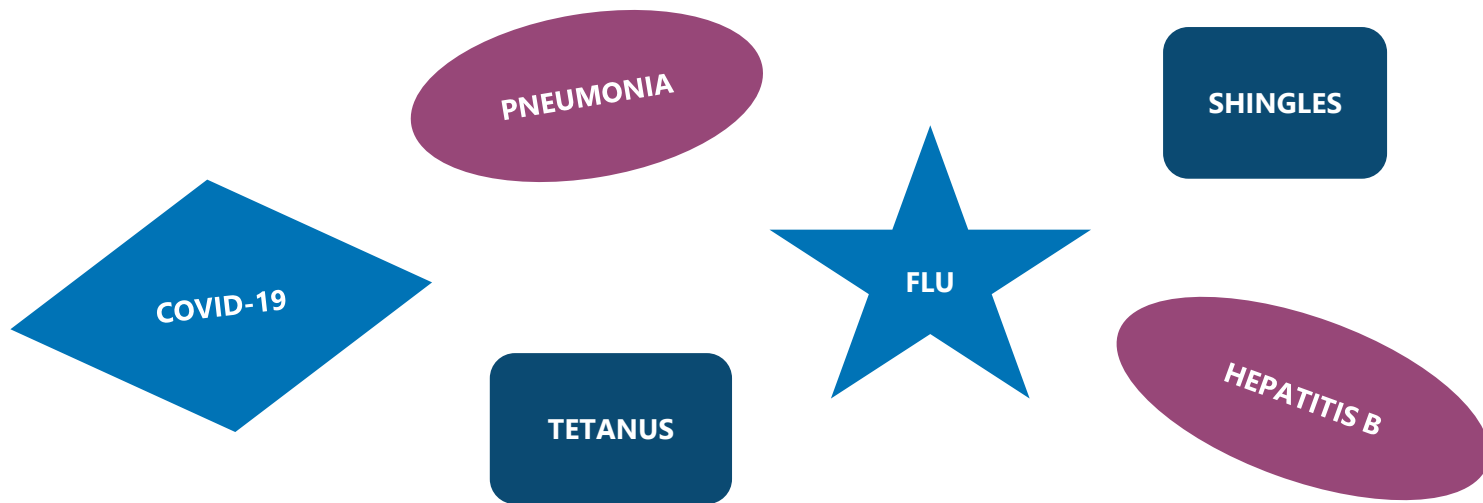
When questioning Mrs. Patel upon admission, she is unsure if she had her pneumonia vaccination in the past, but she remembers having the shingles vaccinations about 8 years ago. She lived in a small town at the time and isn't sure if her records would be available.

What is your plan of action for Mrs. Patel's vaccination status?



Decreased Accessibility to Preventive Care in the Pandemic Meant Fewer Adults Got Vaccines

Adult vaccinations help us avoid hospitalization, illness and death



[Bulletin Board Bundles | HQIN](#)

Case Study 2

October 1, 2022: Jamie Castleberg is a long-term resident at a small nursing home in Glendale, Missouri. He is 52 with heart disease, CVA and HIV.

He has been in Glendale for two years and you are reviewing his records for his yearly meeting. You notice he has had three shots of Moderna and is due for his 2nd booster. You are having a clinic this week but only for Pfizer.



What is your plan of care for Jamie's vaccination, and what else might he be due for? His stroke has caused some wasting in his left side. What do you take into consideration?

Prepare Vaccine and Syringe

- Make sure the preparation area is a clean, designated space/supplies available
 - Prepare the vaccine (follow manufacturer's instructions)
 - Choose the correct needle

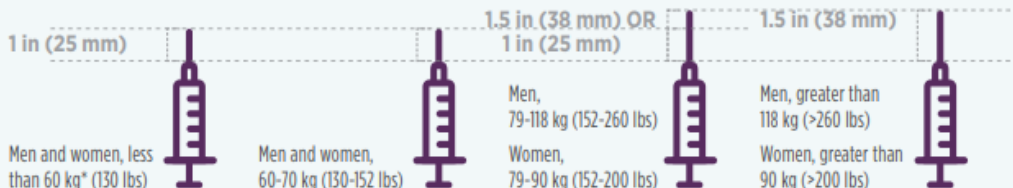
When administering vaccine by an intramuscular (IM) injection to an adult:



Use the correct syringe and needle

- » Vaccine may be administered using either a 1-mL or 3-mL syringe
- » Use a 22 to 25 gauge needle
- » Use the correct needle size based on your patient's size

Injection site: Deltoid muscle of upper arm



*Some experts recommend a 5/8-inch needle for men and women who weigh less than 60 kg (130 lbs).



Multi-Dose Vial
(CDC)



Single Dose Vial
(CDC)



I.M. Injection
Supplies (CDC)

Vaccinations (Not Just COVID Vaccines) Reduce Illness and Readmissions

Vaccines recommended for residents of nursing facilities include:

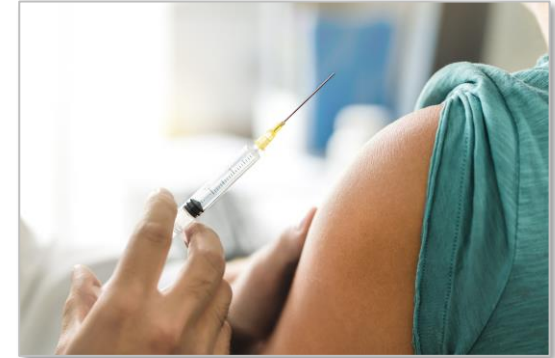
- **Influenza** – Fluzone HD Quad, Flublok Quad, Fluzone PF Quad, Fluzone Quad
- **Pneumococcal** – Pneumovax 23, Prevnar 13, PCV 15, Prevnar 20
- **Tetanus** – Every 10 years with Tdap
- **Shingles** – Shingrix



Boosting for COVID? Add on Needed Vaccination

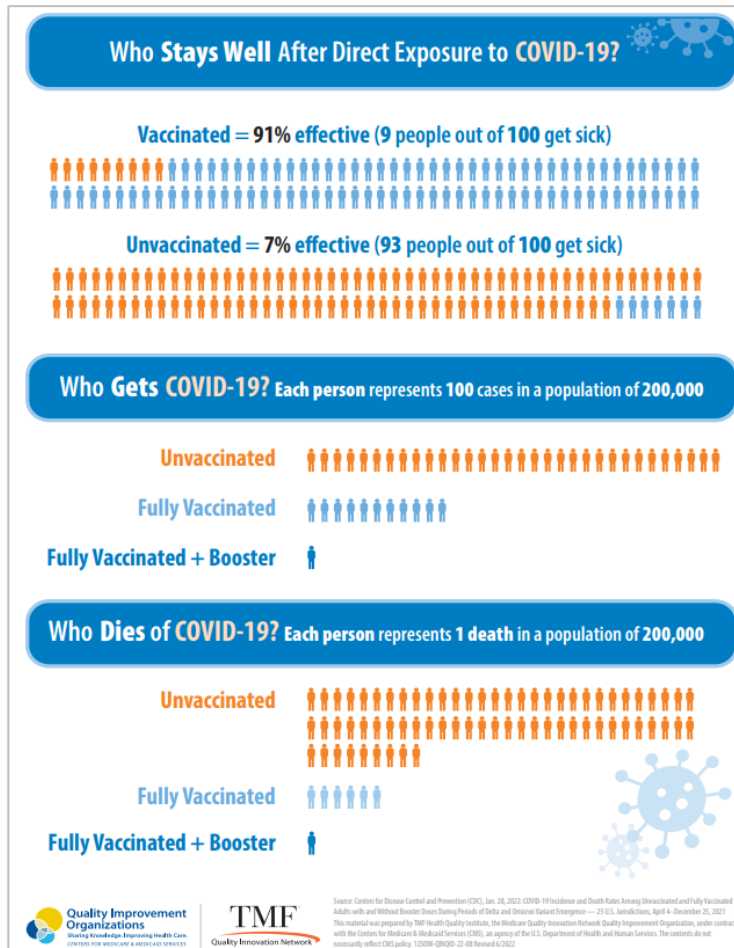
Adults 65 and Over:

- 69% had an influenza vaccine within 1 year
- 56.9% had a tetanus vaccine within 10 years
- 63.6% had a pneumococcal vaccine
- 34.2% had a shingles vaccine



Disparity with >65 Vaccinations:

- Vaccine coverage highest for non-Hispanic white adults
- Vaccine rates lowest for poor adults



Infographic flyer highlighting the importance of obtaining the COVID-19 vaccine and boosters.

We got this as a team – let's all do our part!

Case Study 3

Mrs. Esme Hernandez is an 88-year-old resident of your 250-bed facility in Charleston, SC. She has lived in Angel Live Oaks for 11 years. Her health has declined quite a bit and she has developed an open area on her hip.

What vaccine would you want to make sure she has had?

If Mrs. Hernandez was at the end of life, what vaccine might you consider not giving?

Why might you give her a COVID vaccine even if she was nearing the end of life?



Shingles in Nursing Home Residents

- The risk of shingles increases with age
- The risk of complications, hospitalization and death from shingles increases with age
- Post herpetic neuralgia (severe pain from shingles) risk increases with age
- 33% of people in the U.S. will get shingles in their lifetime
- The Shingrix vaccine is over 90% effective at preventing shingles
- Incidence increases with age, 50% in those over 85
- The mortality rate, mainly a risk for immunocompromised, is 5-15%

[Shingles \(Herpes Zoster\) Vaccination | CDC](#)

[Gnann JW Jr, Whitley RJ. Clinical practice. Herpes zoster. N Engl J Med. 2002 Aug 1;347\(5\):340-6. doi: 10.1056/NEJMcp013211. PMID: 12151472.](#)

HQIN COVID Vaccine Process Guide

Vaccination Clinic Administration Process Guide

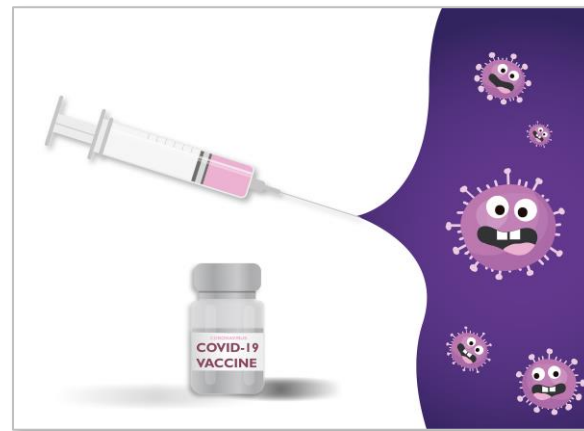
A Checklist for Long-Term Care Facilities

Long Term Care Facilities (LTCF) should ensure they have an agreement in place for ongoing COVID-19 vaccination with their LTCF pharmacy provider or another designated provider [Long-Term Care Pharmacies Participating in the Federal Retail Pharmacy Program](#).

Pre-Vaccination Administration:

- ☐ Establish facility points of contact (POCs), one of whom should be a licensed nurse, to communicate with and coordinate vaccination administration with the pharmacy provider.
 - Primary POC Name: _____
 - Secondary POC Name: _____
 - * *Best practice recommendation: designate a primary and secondary POC (e.g., administrator, director of nursing, or the infection preventionist) to receive notifications from your pharmacy provider.*
- ☐ Determine which manufacturer's COVID-19 vaccination/boosters, influenza, and pneumonia vaccines your pharmacy will stock i.e., Pfizer, Moderna, Janssen, high dose quadrivalent fluzone, PCV13, PPSV23, etc.
- ☐ Notify your pharmacy provider when the need for vaccination administration of residents and/or staff is identified. Notify your pharmacy of the number of vaccines needed for each brand of COVID-19 vaccines.
- ☐ Screen all residents and staff to determine who is eligible to receive vaccinations. Screening should include prior immunization, medical precautions, and/or medical contraindications. Follow CDC and ACIP recommendations for vaccines.
 - [Interim Clinical Considerations for Use of COVID-19 Vaccines Currently Approved or Authorized in the United States](#).
 - [ACIP Influenza Vaccine Recommendations | CDC](#)
 - [Routine and Influenza Immunization Services During the COVID-19 Pandemic: Interim Guidance | CDC](#)
 - [ACIP COVID-19 Vaccine Recommendations | CDC](#)
 - [ACIP Pneumococcal Vaccine Recommendations | CDC](#)
- ☐ Notify your pharmacy of the number of COVID-19 vaccines needed for additional doses or booster doses.
- ☐ Notify your pharmacy provider of the number and type of influenza vaccines needed if conducting flu vaccinations along with COVID-19 vaccinations.

We can also give you your flu shot today and get you better protected.



New COVID Vaccine

New COVID-19 Vaccine Under Emergency Use Authorization as of 7/25/22

The Centers for Disease Control and Prevention (CDC) recently approved the Advisory Committee on Immunization Practices (ACIP) recommendation for the **NOVAVAX COVID-19** vaccine, named NVX-CoV2373.

Key Considerations to Note

- Emergency Use Authorization (EUA) approval has been granted for the primary series for those 18 years of age and older
- The Novavax vaccine is NOT authorized at this time as a booster shot for itself or other COVID vaccinations
- Novavax COVID-19 is a protein subunit vaccine; it contains harmless proteins of the COVID virus with an adjuvant that helps the body's immune system respond to the virus in the future
- This mechanism of action has been used for more than 30 years in other vaccines including those for hepatitis B, the flu and whooping cough
- The vaccine does NOT contain eggs, preservatives, latex or metals
- The recommended dosing includes:
 - Two doses in the primary series, administered as an intramuscular injection in the upper arm
 - The second dose is given 3 to 8 weeks after the first dose
 - Immunocompromised individuals should receive 2 doses, 3 weeks apart (3rd dose not yet authorized as of 7/25/22)

Check the Reference Links provided for the most current information.

Reference Links

- [Novavax COVID-19, Adjuvanted Vaccine: Overview and Safety | CDC](#)
- [Novavax Healthcare Provider Fact Sheet | FDA](#)

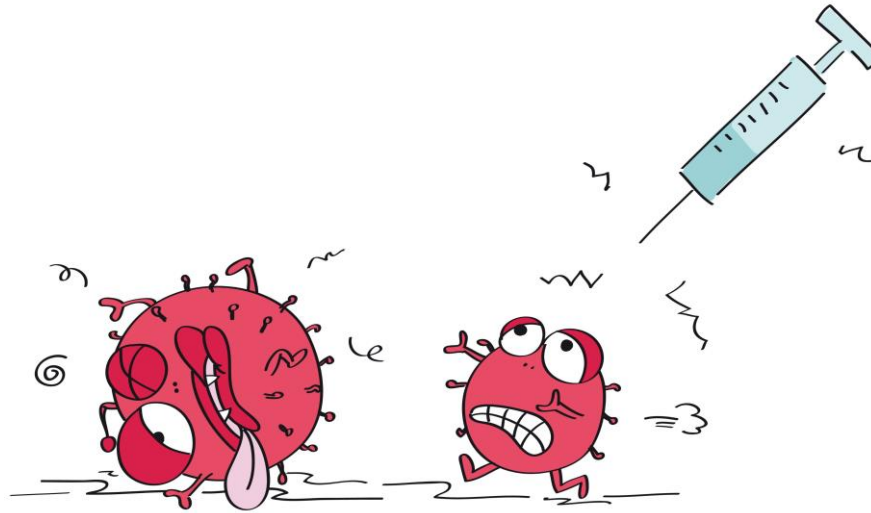
This material was prepared by Health Quality Innovations (HQI), a Quality Improvement Network Quality Improvement Organization (QIO) under contract with the Centers for Medicare & Medicaid Services (CMS) on behalf of the U.S. Department of Health and Human Services (HHS). Views expressed in this material do not necessarily reflect the official views or policy of CMS or HHS, and are subject to change without notice. For more information, contact HQI at 1-800-455-4555 or visit us at www.hqi.org.



[New COVID-19 Vaccine Under Emergency Use Authorization Flyer | HQIN](#)

[Novavax COVID-19, Adjuvanted Vaccine: Overview and Safety | CDC](#)
[Novavax Healthcare Provider Fact Sheet | FDA](#)

Use Vaccinations to Squash the "Bugs" That Can Make You or Your Loved Ones Sick



Polling Question 1

Have you had a great vaccine champion who has been able to improve vaccination rates at your facility?

Type in chat who it is – their role or first name.

A. Yes

B. No



Polling Question 2

Equipment and supplies are a problem for us in vaccinating people.

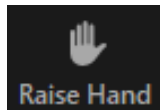
Type in chat what is needed.

A. Yes

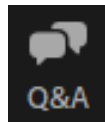
B. No



Questions? Comments? Share With Colleagues What is Working or What is Difficult for Your Team!



Raise your hand to ask a question



Or you may type a question by clicking the **Q&A** icon

*Don't hesitate to ask a question at any time
during the presentation of the remaining slides*

Simple Strategies – An HQIN Resource

Think About It...

An annual flu shot is the best way to prevent influenza and protect yourself, family, and residents.

Why Take the Vaccine?

- Getting vaccinated will help keep you, your family, and your residents healthy and safe
- The flu can be a serious disease that can lead to hospitalization and sometimes even death. Anyone can get very sick from the flu, including people who are otherwise healthy
- You can get the flu from residents and coworkers who are sick with flu
- If you become sick with the flu, you can spread it to others even if you do not feel sick

The Facts

- Getting a flu vaccine does not increase your risk of getting sick from COVID-19
- Getting a flu vaccine is still the best way to prevent flu illness, even with wearing a mask, hand washing and social distancing
- It is essential to get your flu vaccine annually to protect yourself and your community from vaccine preventable illnesses and outbreaks

[Simple Strategies for Encouraging Staff to Receive the Influenza Vaccine | HQIN](#)

Resource Library

- [Workplace Vaccination Program | CDC](#)
- [Clinical Care Considerations for COVID-19 Vaccination | CDC](#)
- [Entrance Conference Worksheet for COVID vaccine | LeadingAge MN](#)
- [CMS-20054 Infection Prevention Control and Immunizations | CMS](#)
- [Interim Final Rule - COVID-19 Vaccine Immunization Requirements for Residents and Staff \(QSO-21-19-NH\) | CMS](#)
- [Interim Final Rule \(IFC\), CMS-3401-IFC, Additional Policy and Regulatory Revisions in Response to the COVID-19 Public Health Emergency related to Long-Term Care \(LTC\) Facility Testing Requirements \(QSO-20-38 NH REVISED\) | CMS](#)



Resource Library, continued

- [Nursing Home Visitation – COVID-19 \(REVISED\) \(QSO-20-39-NH\) | CMS](#)
- [Long-Term Care and Skilled Nursing Facility Attachment A \(QSO-22-07 ALL\) | CMS](#)
- [LTCSP Procedure Guide | CMS](#)
- [QSO-21-08-NLTC REVISED | CMS](#)
- [Nursing Home COVID-19 Vaccination Booster Action Plan and Resources | HQIN](#)
- [Vaccine Clinic Administration Process Guide | HQIN](#)
- [Pneumococcal Vaccine Timing for Adults | CDC](#)
- [COVID-19 Vaccination & Booster Tracking Tool | HQIN](#)
- [Vaccination | The Joint Commission](#)
- [Protect your Patients with the New Shingles Vaccine | CDC](#)
- [New COVID-19 Vaccine Under Emergency Use Authorization Flyer](#)

Next Session:

Mining for Motivation: Finding Others' Internal Motivation with Person-Centered Interviewing

Tuesday, September 13, 2022
2:00 p.m. EST | 1:00 p.m. CST



FOR MORE INFORMATION

Call 877.731.4746 or visit www.hqin.org

LTC@hqin.solutions

Kansas

Brenda Groves

Quality Improvement Advisor

bgroves@kfmc.org

785.271.4150

Missouri

Dana Schmitz

Quality Improvement Advisor

dschmitz@hqi.solutions

314.391.5538

South Carolina

Beth Hercher

Quality Improvement Advisor

bhercher@thecarolinascenter.org

803.212.7569

Virginia

Allison Spangler

Quality Improvement Advisor

aspangler@hqi.solutions

804.289.5342

Mary Locklin

Quality Improvement Advisor-

Infection Prevention

mlocklin@hqi.solutions

804.287.6210

From HQIN:

To all essential care giving teams
supporting residents and families,

*Thank you for attending
and all you do*