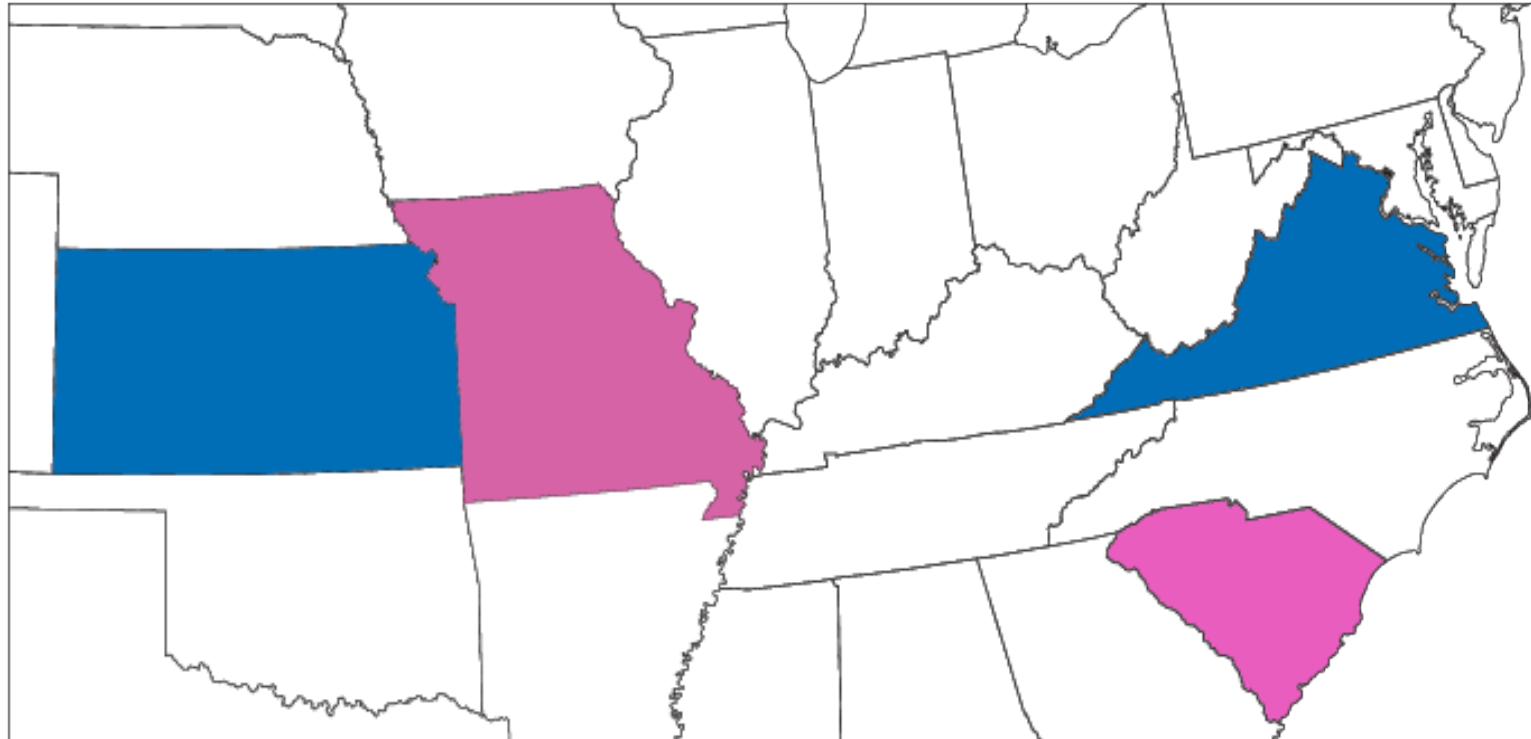


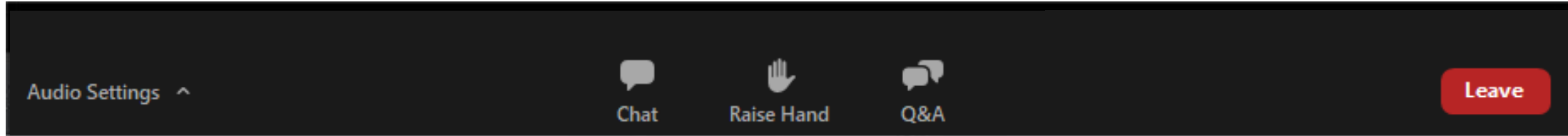
# Normalizing All Things COVID-19

2/14/2023

# Health Quality Innovation Network



# Logistics – Zoom Webinar



To ask a question, click on the **Q&A** icon.

**Raise your hand** if you want to verbally ask a question.

Resources from today's session will be posted in **Chat**.

You may adjust your audio by clicking **Audio Settings**.

You have been automatically muted with video turned off.

# Your Team



**Katie Richards**  
Consulting Manager



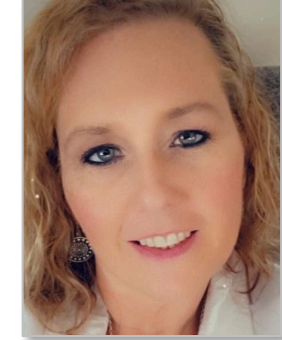
**Mary Locklin, MSN, RN, CIC**  
Senior QIA-Infection Prevention



**Sue Moeslein, MSA, BSN, RN, ACM, CIC**  
Infection Prevention Consultant



**Betsy Allbee, BSN, RN, CIC, FAPIC**  
Consultant



**Brandy Stevens, RN, MREMT-P**  
Consultant



**Elizabeth Nugent,**  
Consultant



**Jackie Elliott, RN, RAC-CT, RAC-CTA**  
Consultant



**Judy Carte,**  
Consultant



**Cindy Warriner, BS, RPh, CDCES,** Senior Pharmacy Consultant



**Gigi Amateau, MS, PhD**  
Assistant Professor, VCU, Dept. of Gerontology



**April Faulkner**  
Communications Specialist

# Goals for this Series:

- Assist attendees in gaining knowledge related to updates associated with COVID-19 vaccines and boosters
- Assist attendees in meeting CMS regulatory expectations



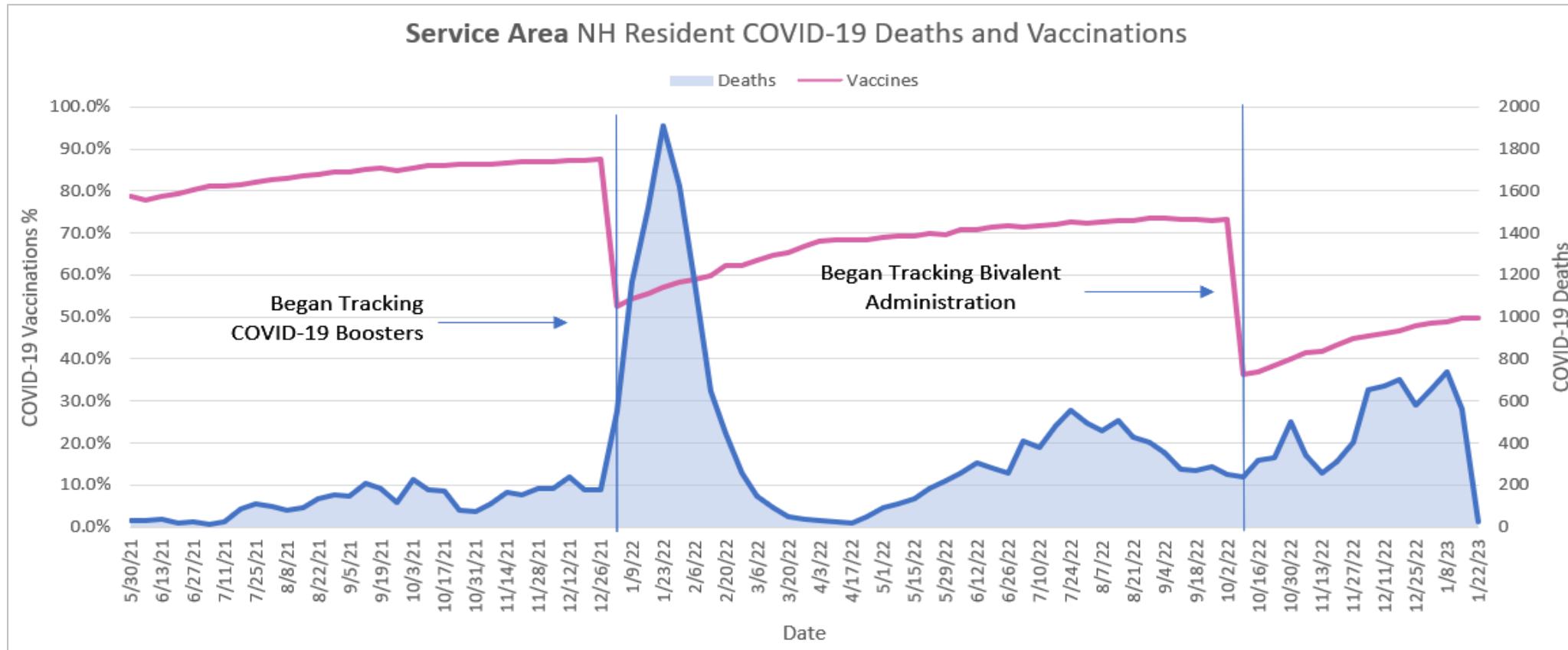
*The content presented in this webinar is based on COVID-19 information and guidance as of the date of this session.*



# Goals Specific to this Webinar:

- Attendees will better understand the latest COVID-19 developments (guidelines, best practices, etc.)
- Attendees will increase their knowledge of COVID-19 vaccines and boosters
- Attendees will feel more confident in their ability to meet CMS regulatory expectations

# Pandemic Perspective



**Mixed  
Messaging**



**Reactive  
Approaches**



**Vaccine  
Creation**

# Pandemic Perspective: Focusing on the Positive Results of COVID-19

**Promoted mental health  
awareness  
for staff and residents**

**Encouraged  
teamwork and  
partnerships**

**Shifted the  
national conversation  
on aging and ageism**

**Spotlighted healthcare  
(especially infection  
prevention!)**

**Fostered  
proactive engagement  
in approaching  
COVID-19**

**Necessitated creation  
of vaccines that  
prevented  
hospitalizations and  
saved lives**



# COVID-19 Vaccine Development & Dissemination

**April 30**

Operation Warp Speed, an initiative to produce a vaccine against the SARS-CoV-2 virus as quickly as possible, launches. The operation funds the development of six promising vaccine candidates while they are still in the clinical trial phase, including the Pfizer-BioNTech and Moderna mRNA vaccines.

**July 22**

The Department of Defense (DOD) and HHS reach a deal with Pfizer BioNTech for the **delivery and distribution of 100 million doses of the Pfizer BioNTech COVID-19 vaccine candidate in December 2020**, upon confirmation that the vaccine is safe and effective.

**December 31**

**2.8 million people in the U.S. have received a COVID-19 vaccine dose**

**2020**

**March 17**

Moderna Therapeutics begins the first human trials of a vaccine to protect against COVID-19 at a research facility in Seattle, Washington.

**May 21**

AstraZeneca receives more than \$1 billion from the U.S. government in funding for the development of the AstraZeneca/Oxford University COVID-19 vaccine, with the first doses due to arrive in September 2020.

**December 14**

Sandra Lindsay, a nurse in New York, becomes the first American outside of clinical trials to receive a COVID-19 vaccine.

# COVID-19 Vaccine Development & Dissemination, continued

**March 13**

More than **100 million** COVID-19 vaccine doses have been administered in the U.S.

**August 31**

Monovalent boosters are no longer authorized by the FDA

**2021**

**2022**

**January 26**

More than 23 million COVID-19 vaccine doses have been administered in the U.S.

**November 19**

CDC recommends that everyone ages 18 years and older who received a Johnson & Johnson, Pfizer-BioNTech or Moderna COVID-19 vaccine should receive a booster after they are fully vaccinated.

**2022**

CDC recommends one **updated (bivalent) booster dose** for everyone **aged 5 years and older** if it has been at least **2 months** since their last dose.



# Pandemic Perspective: Moving Forward in the New Normal

- **Focus on readiness**
  - Emergency preparedness plan
  - Infection prevention plan
  - Occupational (employee) health processes
- **Stay current with accurate information**
  - CDC
  - CMS
- **Use outside resources**
  - Regional health department
  - Pharmacies/Pharmacists
  - QIOs
- **Promote and educate about vaccines**

**“My hope is that our experiences during this pandemic will trigger thoughtful planning towards the ‘new normal.’ This includes an improved public health infrastructure, a sufficient stockpile of PPE, an appreciation for science as part of decision making and overall greater investments in the health of all.”**

**- Bitu Kash, Professor, Texas A&M University**

**Let the  
questions begin!**

**"...collaboration at the  
community level is essential"**

**- Katie Smith Sloan,  
President/CEO LeadingAge**

## **Our panel of experts is available to answer questions about the following topics (and more!):**

- COVID-19 testing
- COVID-19 education for staff and/or residents
- Personal protective equipment
- Cleaning/disinfection
- Cohorting/quarantining
- Environment of care
- Infection prevention and memory care
- Mental health/trauma-informed care
- Survey readiness
- Vaccinations

# Resources

- [Trauma-Informed Care | AHRQ](#)
- [SAMHSA's National Center for Trauma-Informed Care - Trauma-Informed Care Implementation Resource Center](#)
- [SAMHSA's Concept of Trauma and Guidance for a Trauma-Informed Approach](#)
- [Tools for Transformation: Becoming Accessible, Culturally Responsive, and Trauma-Informed Organizations | National Center on Domestic Violence, Trauma & Mental Health](#)
- [How to Integrate Trauma-Informed Care into Nursing Homes | Scholars Strategy Network](#)
- [Appendix PP Guidance to Surveyors for Long Term Care Facilities | CMS](#)



# Resources, continued

- [CDC Museum COVID-19 Timeline | CDC](#)
- [Workplace Vaccination Program | CDC](#)
- [Clinical Care Considerations for COVID-19 Vaccination | CDC](#)
- [Entrance Conference Worksheet for COVID vaccine | LeadingAge MN](#)
- [CMS-20054 Infection Prevention Control and Immunizations | CMS](#)
- [Interim Final Rule - COVID-19 Vaccine Immunization Requirements for Residents and Staff \(QSO-21-19-NH\) | CMS](#)
- [Interim Final Rule \(IFC\), CMS-3401-IFC, Additional Policy and Regulatory Revisions in Response to the COVID-19 Public Health Emergency related to Long-Term Care \(LTC\) Facility Testing Requirements \(QSO-20-38 NH REVISED\) | CMS](#)

# Resources, continued

- [Nursing Home Visitation – COVID-19 \(REVISED\) \(QSO-20-39-NH\) | CMS](#)
- [Long-Term Care and Skilled Nursing Facility Attachment A \(QSO-22-07 ALL\) | CMS](#)
- [Long Term Care Survey Process \(LTCSP\) Procedure Guide | CMS](#)
- [Nursing Home COVID-19 Vaccination Booster Action Plan and Resources | HQIN](#)
- [Vaccine Clinic Administration Process Guide | HQIN](#)
- [You Do Not Have to Cope Alone. Access Resources for Frontline Worker Mental Health | HQIN](#)
- [Identifying and Providing Person-Centered Strategies for Residents with Depression, Anxiety, or Cognitive Decline | HQIN](#)
- [COVID-19 Community Level and Safety Measures by CDC Facility](#)



# Resources, continued

- [COVID-19 Vaccine Effectiveness and Safety | MMWR \(CDC\)](#)
- [The Basics of Eye Protection for COVID-19 | APIC](#)
- [Infection Prevention in Memory Care Pocket Card | HQIN](#)
- [C0900. Staff Assessment for Mental Status | PAC.Training](#)
- [Risk Assessment, Emergency Preparedness, Regulatory Compliance Slides | HQIN](#)
- [Safe Visitation in Nursing Homes | HQIN](#)
- [Cohorting Plan Guidelines | HQIN](#)
- [Visitation Plan Guidelines | HQIN](#)



## Next Session:

*Effective Vaccine Practices: Finding the "Why?"*

**Tuesday, March 14, 2023**

**2:00 p.m. EST | 1:00 p.m. CST**



# FOR MORE INFORMATION

Call 877.731.4746 or visit [www.hqin.org](http://www.hqin.org)

**LTC@hqin.solutions**

## **Kansas**

**Brenda Groves**

Quality Improvement Advisor

**[bgroves@kfmc.org](mailto:bgroves@kfmc.org)**

785.271.4150

## **Virginia**

**Mary Locklin**

Quality Improvement Advisor-Infection Prevention

**[mlocklin@hqi.solutions](mailto:mlocklin@hqi.solutions)**

804.287.6210

## **Virginia and Missouri**

**Allison Spangler**

Quality Improvement Advisor

**[aspangler@hqi.solutions](mailto:aspangler@hqi.solutions)**

804.289.5342

## **South Carolina**

**Kristine Williamson**

Quality Specialist

**[kwilliamson@thecarolinascenter.org](mailto:kwilliamson@thecarolinascenter.org)**

919.461.5525

---

From HQIN:

To all essential care giving teams  
supporting residents and families,

*Thank you for attending*

