



Health Quality Innovation Network

Prepare, Prevent, Protect  
3/21/2023

# Training, Education, Resident Care Practices

**Presented by:**

Mary Locklin, MSN, RN, CIC

Deb Smith, MLT, BSN, CIC, CPHQ

# Disclosure of Conflict(s) of Interest

Mary Locklin, MSN, RN, CIC, has no relevant financial relationships or relationships with ineligible companies of any amount during the past 24 months.

Deb Smith, MLT, BSN, CIC, CPHQ, has no relevant financial relationships or relationships with ineligible companies of any amount during the past 24 months.

# Prepare, Prevent, Protect

These brief learning opportunities will introduce essential infection prevention concepts and allow for recipients to connect directly to a certified infection preventionist for support.



## **Series Goals and Learning Objectives:**

- Introduce and tutor audience in creation and implementation of infection prevention components essential to a robust infection prevention program
- Collaborate with nursing home staff with an infection prevention role/duties to bolster the facility's infection prevention program

# Your Team



**Mary Locklin**  
**MSN, RN, CIC**  
Senior Quality Improvement  
Advisor – Infection Prevention

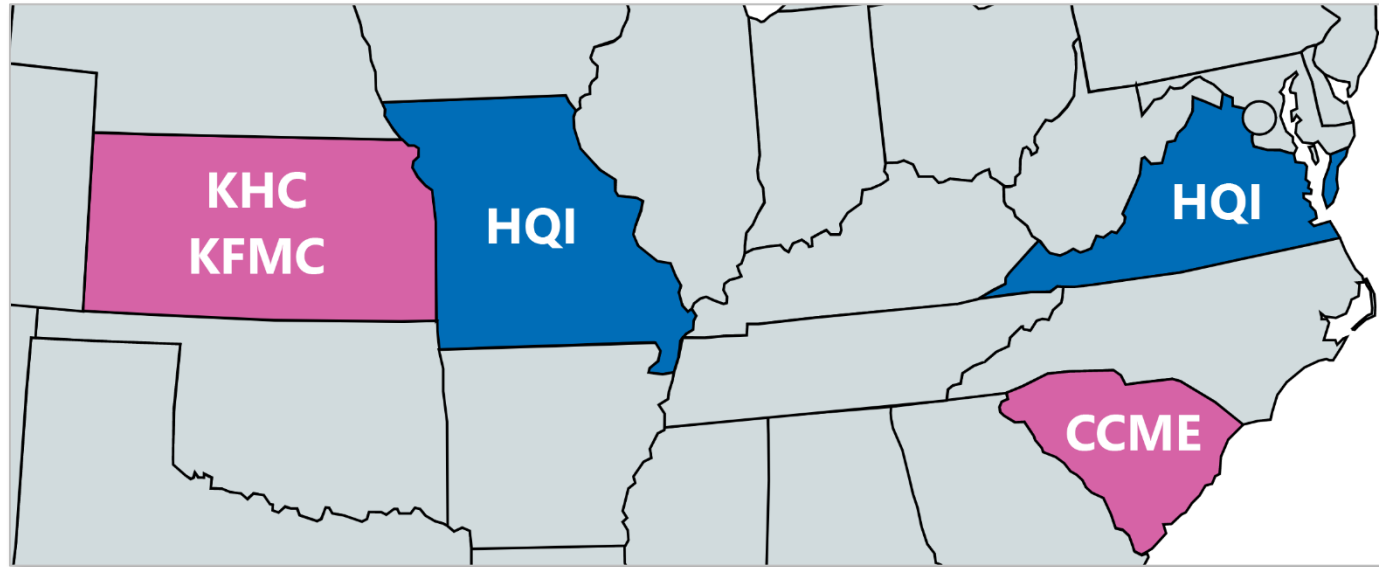


**Deb Smith**  
**MLT, BSN, CIC, CPHQ**  
Consulting Manager

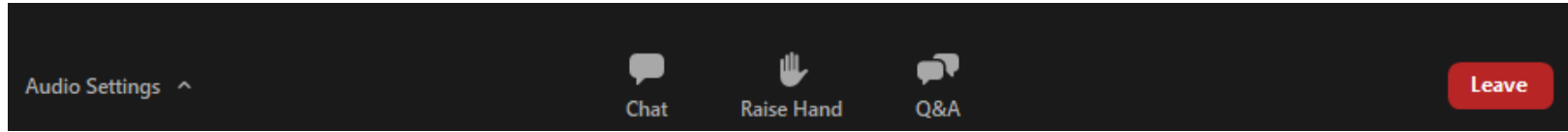


**April Faulkner**  
Communications  
Specialist

# Health Quality Innovation Network



# Logistics – Zoom Webinar



To ask a question, click on the **Q&A** icon.

**Raise your hand** if you want to verbally ask a question.

Resources from today's session will be posted in **Chat**.

You may adjust your audio by clicking **Audio Settings**.

You have been automatically muted with video turned off.

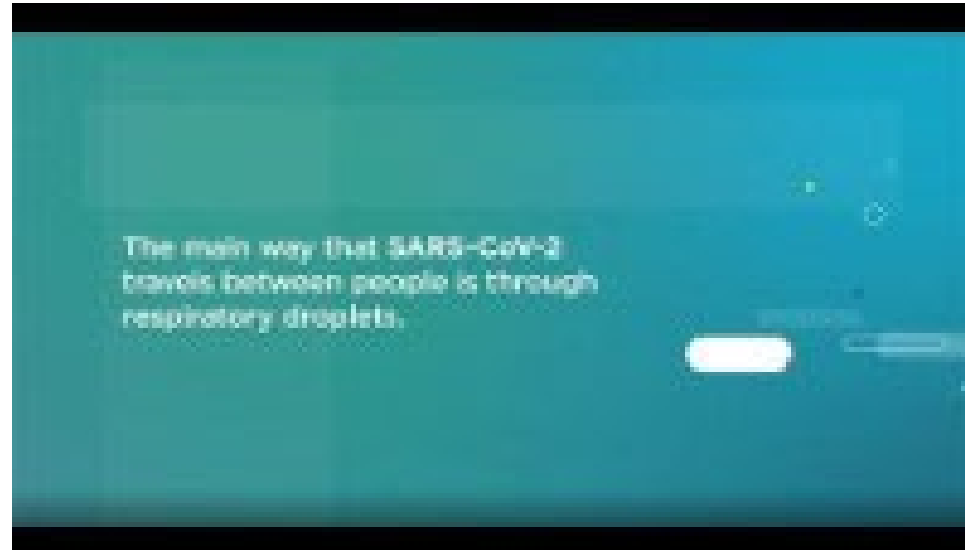
# Project Firstline

Infection Prevention Training



[Project Firstline Print Materials and Job Aids](#)

# Project Firstline



[Project Firstline Respiratory Droplet Basics Video](#)



# Project Firstline Resource Roadmap

## CDC's Project Firstline Roadmap Infection Prevention & Control Resources



### Continuing Education

Earn continuing education units (CEUs) with short 3-8 minute common language videos on essential infection prevention and control topics, perfect for nonclinical healthcare workers or a back to basics review.  
[www.cdc.gov/infectioncontrol/projectfirstline/resources/videos.html#CE](http://www.cdc.gov/infectioncontrol/projectfirstline/resources/videos.html#CE)

### Print Materials

Use these posters and infographics to breakdown complex infection prevention and control concepts. These resources are polished, professional, and ready to post.  
[www.cdc.gov/infectioncontrol/projectfirstline/healthcare/print.html](http://www.cdc.gov/infectioncontrol/projectfirstline/healthcare/print.html)





### Interactive Content

Use real time infection prevention and control challenges with short interactive and educational content as an individual or group activity.  
[www.cdc.gov/infectioncontrol/projectfirstline/healthcare/interactive.html](http://www.cdc.gov/infectioncontrol/projectfirstline/healthcare/interactive.html)

### Training Toolkits

Want to lead an infection prevention and control training and could use a hand to get started? These toolkits will help you plan and include slide decks, handouts, and even facilitator scripts.  
[www.cdc.gov/infectioncontrol/projectfirstline/healthcare/training.html](http://www.cdc.gov/infectioncontrol/projectfirstline/healthcare/training.html)



**Above are some key resources from  
CDC's Project Firstline. Discover more at:**  
[www.cdc.gov/infectioncontrol/projectfirstline](http://www.cdc.gov/infectioncontrol/projectfirstline)



**HAIA&R**  
Healthcare Associated Infections & Antimicrobial Resistance Program  
[www.vdh.virginia.gov/haiar/](http://www.vdh.virginia.gov/haiar/)

SEP 2022



**PROJECT FIRSTLINE**  
CDC's National Training Collaboration for Healthcare Worker Knowledge & Competency

# Pause for Prevention

## Pause for Prevention

The Pause for Prevention program is a turnkey program to assist Nursing Homes in ensuring all staff have a basic understanding of infection prevention practices. The Health Quality Innovation Network (HQIN) developed the series of modules as a means of involving all staff who encounter residents (or work in their environment) in infection prevention practices proven to enhance the safety of residents and team members. The program includes 8 modules intended to be interactive and brief (approximately 15 minutes).

### Modules

- Hand Hygiene
- Cough Etiquette
- Personal Protective Equipment
- Masking (Still) Matters
- Safety Behaviors are for Everyone
- Infection Prevention Considerations for Residents with Impaired Memory
- Best Practices for Employee Health - Vaccines and When to Stay Home
- Caring for Yourself During an Outbreak or Pandemic

## Pause for Prevention Module 4: Masking (Still) Matters!



Surgical or procedure masks and respirators (N95s) are personal protective equipment (PPE) regulated by the Food and Drug Administration (FDA), the Centers for Disease Control and Prevention (CDC), the National Institute for Occupational Safety and Health (NIOSH) and the Occupational Safety and Health Administration (OSHA) for use in healthcare. N95s are a special type of facemask constructed to filter at least 95% of airborne molecules.

### Determine Which Type of Mask is Appropriate and Use Either:

- A surgical or procedure facemask.
- A respirator (N95) when caring for COVID-positive residents, residents suspected of COVID-19 or residents suspected of or confirmed with TB. An N95 is in addition to other PPE (gown, gloves, eye protection) necessary for providing care in these situations.

### Instructions for Use of Surgical or Procedure Masks and N95s:

- Make sure a surgical or procedure mask or N95 is approved for use in your facility.
- Wash your hands before putting on (donning) a surgical or procedure mask or N95.
- Handle the surgical or procedure mask by touching ear loops, cords or head straps. Handle the N95 by touching the head straps. Avoid touching the fabric part of the surgical or procedure mask or N95.
- Make sure a surgical or procedure mask or N95 fits snugly against the side of your face without gaps and covers the mouth and nose completely. \*N95s require special fit-testing.
- Do not wear a surgical or procedure mask or N95 on your chin, around your neck, on your arm or anywhere other than on your face.
- Do not cross the straps of a surgical or procedure mask or N95.
- Do not touch or adjust a surgical or procedure mask or N95 without cleaning your hands before and after.
- Discard (throw away) a facemask or N95 if it is soiled or anytime it is removed (meal breaks, end of shift, etc.).
- Wash your hands after removing (doffing) a facemask or N95.

**In situations where residents are required and are able to wear a mask, they should wear a mask that covers their nose and mouth.**

### Module 4: Masking (Still) Matters!

# Agency for Healthcare Research and Quality (AHRQ)

## TeamSTEPPS® 2.0 for Long-Term Care

The Agency for Healthcare Research and Quality's (AHRQ) TeamSTEPPS 2.0 for Long-Term Care curriculum reflects updates to the original TeamSTEPPS in Long-Term Care curriculum, which was released to the public in 2012. Since then, AHRQ released TeamSTEPPS 2.0, an update to the original curriculum that focuses on hospital-based teams. As a result, AHRQ has sponsored the development of an updated curriculum for use in the long-term care setting.

[TeamSTEPPS® 2.0 for Long-Term Care | Agency for Healthcare Research and Quality](#)

# Centers for Disease Control and Prevention (CDC)



*Tune in to Safe Healthcare* focuses on a variety of infection control and prevention topics. These webinars feature CDC and external experts and serve as a tool to educate healthcare providers on best practices.

# Society for Healthcare Epidemiology of America (SHEA)

## Prevention

### Free Continuing Education for Medical Professionals

Prevention CHKC is designed to train frontline healthcare personnel, defined as those “responsible for direct patient care” in best practices to prevent and control HAIs and pathogens that can spread in the healthcare setting. Training educates frontline personnel to successfully execute best practices in topics that include:

- Prevention of CLABSI, CAUTI, SSI, VAP/VAE
- Prevention of *C. difficile* and MRSA
- Prevention strategies:
  - Methods for appropriate performance and timing of hand hygiene in the healthcare setting
  - Disinfection and environmental control

Cost: \$25 (FREE with this coupon code: **COMPCHECK**)

# Polling Question

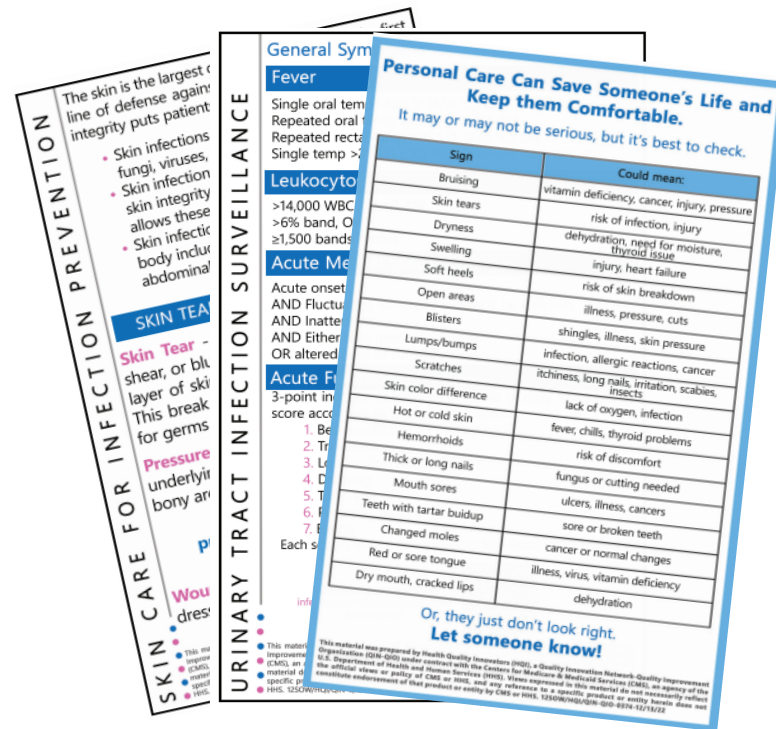
Infection prevention training is provided to staff:

- A. Annually
- B. Frequently, in huddles, resource books available on units, etc.
- C. When there is a change in an infection prevention practice or a new product, or new equipment is introduced
- D. Other



# Resident Care Practices

- Assessment
- Hygiene
- Cleaning and Disinfection of the Environment
  - Room
  - Bathroom
  - Personal Items
- Devices
- Equipment
- Vaccines and Immunizations
- Resident Education



# Resident Care Practices

Designed to reduce transmission of resistant organisms while employing targeted gown and glove use during high-contact resident care activities.

In addition to following standard precautions, gowns and gloves should be worn during the following high-contact resident care activities:

- Dressing
- Bathing/showering
- Transferring
- Providing hygiene
- Changing linens
- Changing briefs or assisting with toileting
- Device care or use
- Wound care



[Consideration for Use of Enhanced Barrier Precautions in Skilled Nursing Facilities | CDC](#)



# Polling Question

**True or False:** Pathogens like MRSA, *C. difficile*, VRE, etc. cannot survive on surfaces (i.e., in a resident's room) for more than a few minutes.

- A. True
- B. False



# Resident Care Practices

Organism	Range of survival (environment)
<i>Acinetobacter</i> spp.	3 days to 1 year (in-vitro) 36 days within biofilm vs. 15 days for non-biofilm-forming strains
<i>Bordetella pertussis</i>	3 to >10 days; in pernasal swabs: >4 days
<i>Campylobacter jejuni</i>	>6 days, in water >60 days
<i>Clostridium difficile</i> spores	5 months
<i>C. difficile</i> , vegetative form	15 min (dry surface) 6 h (moist surface)
<i>Chlamydia pneumoniae</i>	≤96 h
<i>C. trachomatis</i>	<1 week
<i>Chlamydia psittaci</i>	15 days to months (environment)
<i>Corynebacterium diphtheriae</i>	7 days to 6 months
<i>Corynebacterium pseudotuberculosis</i>	1–8 days, up to several weeks (environment)
<i>Enterococcus</i> spp. including VRE	5 days up to 30 months

<i>Escherichia coli</i>	1.5 h to 16 months
<i>E. coli</i> O157:H7	27 days on spinach leaves, 179 days in soil, 98 days in water
<i>Haemophilus influenzae</i>	12 days
<i>Helicobacter pylori</i>	≤90 min; in water: 2–30 days
<i>Klebsiella</i> spp.	2 h to >30 months, ≤144 h in detergent solution
<i>Listeria</i> spp.	1 day–months, 141 days in water
<i>Mycobacterium bovis</i>	>2 months
<i>Mycobacterium tuberculosis</i>	1 day up to 4 months
<i>Neisseria gonorrhoeae</i>	1–3 days
<i>Neisseria meningitidis</i>	72 h
<i>Parachlamydia acanthamoebae</i>	<4 weeks, in presence of blood <7 weeks
<i>Proteus vulgaris</i>	1–2 days
<i>Pseudomonas aeruginosa</i>	6 h up to 16 months; on dry floor: 5 weeks; in aerosol: few hours

<i>Salmonella typhi</i>	6 h up to 4 weeks
<i>Salmonella typhimurium</i>	10 days up to 4.2 years
<i>Salmonella</i> spp.	1 day
non typhoid <i>Salmonella</i> spp.	336 days
<i>Salmonella enteritidis</i> (broiler farms)	1 year
<i>Salmonella enteritica</i> sv. Tennessee	30 days (dried in desiccated milk powder)
<i>Serratia marcescens</i>	3 days up to 2 months; on dry floor: 5 weeks
<i>Shigella</i> spp.	2 days up to 5 months 3–11 days in water
<i>Staphylococcus aureus</i> including MRSA and MSSA	7 days up to 1 year (in-vitro) 9–12 days (plastic surfaces) 72 h (stainless steel) 6 h (copper)
	≤28 days (dry mops) ≤14 days (in water)

## Survival of Microorganisms on Inanimate Surfaces - PMC | NIH

# Association for Practitioners in Infection Control and Epidemiology (APIC)



The following links are APIC and external resources on long-term care for healthcare professionals.

#### APIC Implementation Guides and Published Resources

- [Guide to Preventing Central Line-Associated Bloodstream Infections](#)
- [Guide to Hand Hygiene Programs for Infection Prevention \(2015\)](#)
- [Guide to Preventing Catheter-Associated Urinary Tract Infections](#)
- [Guide to the Elimination of Methicillin-Resistant \*Staphylococcus aureus\* \(MRSA\) in the Long-Term Care Facility \(2009\)](#)
- [Infection Preventionist's Guide to Long-Term Care \(\\$\)](#)
- [SHEA/APIC Guideline: Infection prevention and control in the long-term care facility \(under review as of 3/26/2020\)](#)
- APIC Text Online (subscription required)(\$)
  - Chapter 62, "Long-Term Care"
  - Chapter 63, "Long-Term Acute Care"
  - Chapter 10, "General Principles of Epidemiology"
  - Chapter 11, "Surveillance"
- [Long-term care infection prevention skills pledge tool](#)—from the *AHRQ Safety Program for Long-Term Care: HAIs/CAUTI* (funded by AHRQ, developed by APIC and HRET)

#### Education & Training

APIC offers a comprehensive collection of clinical education and professional development programs. The following resources are educational opportunities related to long-term care. Visit the [Education & Certification](#) page for more educational opportunities.

- [EPI in Long-Term Care online course \(\\$\)](#)
- [The power of 10: Your role in preventing catheter-associated urinary tract infections in nursing homes](#)—APIC/HRET infographic to educate consumers
- [Lunch with an Expert: Innovative strategies to overcome infection control challenges in LTC](#)—APIC Webinar (free for members)
- [Building Blocks for Infection Prevention in LTC; Closing Gap](#) —APIC Webinar (free for members)

# Centers for Disease Control and Prevention (CDC)

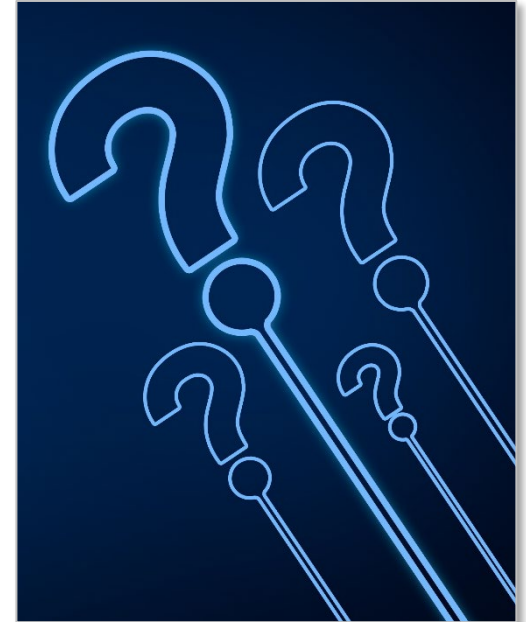
- 14 modules
  - IP Program
  - Infection Preventionist
  - Surveillance
  - QAPI
  - Standard Precautions
  - Isolation Precautions
  - Hand Hygiene
  - CAUTI Prevention
  - Cleaning and Disinfection
  - Linen Management
  - Antibiotic Stewardship
  - Respiratory Infections
  - Water Management
  - Environment of Care
- CME, CN or CEUs available with registration



# Polling Question

The infection preventionist at my facility is:

- A. New to the role and learning as they go
- B. Experienced and confident in their role
- C. Certified in infection prevention
- D. Studying for certification in infection prevention



# Resources

- Advisory Committee on Immunization Practices (ACIP)
- Agency for Healthcare Research and Quality (AHRQ)
- Association for Professionals in Infection Control and Epidemiology (APIC)
- Centers for Disease Control and Prevention (CDC)
- Centers for Medicare & Medicaid Services (CMS)
- Infectious Diseases Society of America (IDSA)
- Institute for Healthcare Improvement (IHI)
- National Association for Healthcare Quality (NAHQ)
- Occupational Safety and Health Administration (OSHA)
- The Society for Healthcare Epidemiology of America (SHEA)
- U.S. Food & Drug Administration (FDA)



# Resources

- [SPICE LTC Infection Prevention Risk Assessment - Statewide Program for Infection Control & Epidemiology | UNC](#)
- [Risk Assessment for Infection Surveillance, Prevention and Control Programs in Ambulatory Healthcare Settings](#)
- [IPC Risk Assessment Spreadsheet](#)
- [Inter-Facility Infection Control Transfer Form for States Establishing HAI Prevention Collaboratives | CDC](#)
- [Incorporating Infection Prevention and Control into an Emergency Preparedness Plan | AHRQ](#)
- [Long Term Care Requirements CMS Emergency Preparedness Final Rule](#)
- [Appendix PP - November 22, 2017 | CMS](#)



# Resources

- [APIC Toolkit for Rural and Isolated Settings](#)
- [State Operations Manual Appendix Z- Emergency Preparedness for All Provider and Certified Supplier Types Interpretive Guidance | CMS](#)
- [Emergency Preparedness Exercises | FEMA](#)
- [Sample Policy for Emergent Infectious Diseases for Skilled Nursing Care Centers | AHCA NCAL](#)
- [Disaster Preparedness Plan Template for use in Long Term Care Facilities | ASPR TRACIE](#)
- [Infection Prevention Annual Risk Assessment Email Template | HQIN](#)
- [Safe Linen and Laundry Management Audit Tool | HQIN](#)
- [Safe Linen/Laundry Management IPC Action Plan Template | HQIN](#)
- [Infection Prevention Plan FY2022 | UNC Medical Center](#)





# Resources

- [Forms & Checklists for Infection Prevention | APIC](#)
- [Nursing Homes and Assisted Living Infection Prevention Training | CDC](#)
- [Infection Prevention and Control Program Sample Policy](#)
- [Hand Hygiene Action Plan Template | HQIN](#)
- [Staff Infection Exposure Prevention Action Plan Template | HQIN](#)
- [Isolation Precautions Action Plan Template | HQIN](#)
- [Environmental Hygiene Action Plan Template | HQIN](#)
- [Competency-Based Training 102 | CDC](#)
- [Break the Chain of Infection with Better Hand Hygiene | HQIN](#)
- [Hand Hygiene Module 1 | HQIN](#)
- [Hand Hygiene Competency Validation | HQIN](#)
- [Hand Hygiene Competency Tracking Tool | HQIN](#)



# Resources

- [Environmental Cleaning Procedures | Environmental Cleaning in RLS | CDC](#)
- [Infection Control Risk Assessment Matrix of Precautions for Construction & Renovation | APIC](#)
- [Sharps Disposal Containers | FDA](#)
- [Environmental Rounding Tool | ASHE](#)
- [Environmental Rounds Worksheet for Infection Prevention](#)
- [Occupational Safety and Health | Workplace Health Resources | Tools and Resources | Workplace Health Promotion | CDC](#)
- [Training Requirements in OSHA Standards Healthcare | OSHA](#)
- [Safe Patient Handling Training for Schools of Nursing | NIOSH | CDC](#)
- [Hierarchy of Controls | NIOSH | CDC](#)
- [Recommended Vaccines for Healthcare Workers | CDC](#)

# Resources

- [Infection Prevention Training | LTCF | CDC](#)
- [Project Firstline Infection Control Training | CDC](#)
- [Project Firstline Roadmap | Virginia Department of Health](#)
- [Pause for Prevention Program | HQIN](#)
- [Tune in to Safe Healthcare: A CDC Webinar Series | Training & Education | Infection Control](#)
- [Long-Term Care | AHRQ](#)
- [Long-Term Care | APIC](#)
- [Long-Term Care Infection Preventionist Essentials | APIC](#)
- [Nursing Home Infection Preventionist Training Course | CDC TRAIN](#)

# Contact Hours Certificate

- Complete the attestation form at <https://go2certificate.com> to receive the contact hours you deserve. This activity awards 0.5 contact hours for nurses. A general certificate of participation is also available.
- If you receive an error when you click the link, copy and paste the URL into your browser. Chrome is recommended for an optimal portal experience.
  - Enter Access Code: **2989-RCP**
  - Enter your email address
  - Click the Confirm button
- If you are a returning user of Go2Certificate, the system will alert you to this fact and request that you enter your password.
- If you are a first-time visitor to Go2Certificate, complete the demographic information, set-up a password and click the Submit button.
- Select the Activity you attended by clicking the box to the left of the activity title. There is only one activity assigned to this access code.
- Click the Continue button.
- Complete the Activity Evaluation by using the Next buttons. Your input is invaluable. At the end of the evaluation, please click the Submit button.
- Please confirm how you would like your name to appear on the certificate.
- Select the box requesting the accreditation you wish to earn. Multiple selections are acceptable. Click the Confirm button.

**The portal will expire  
on April 21, 2023, at  
11:59 p.m. ET.**

In future visits, the system automatically recognizes your account based on your email address. It will ask you to enter your own created password after you have entered the Access Code and your email address.

# FOR MORE INFORMATION

Call 877.731.4746 or visit [www.hqin.org](http://www.hqin.org)

[LTC@hqi.solutions](mailto:LTC@hqi.solutions)

**\*Next Session: 4/18/23 @ 2 p.m. EST**

Antibiotic Stewardship

**Mary Locklin**  
**MSN, RN, CIC**

Senior Quality Improvement Advisor

[mlocklin@hqi.solutions](mailto:mlocklin@hqi.solutions)

804.289.5320

**Deb Smith**

**MLT (ASCP), BSN, RN, CIC, CPHQ**

Consulting Manager

[dsmith@hqi.solutions](mailto:dsmith@hqi.solutions)

804.289.5358

From HQIN:

To all essential care giving teams  
supporting residents and families,

*Thank you for attending*