

Your Health Can't Wait, Vaccinate!

Adults can be protected from deadly diseases.



HEALTH QUALITY INNOVATORS

COVID-19

Older adults and people with underlying medical conditions like heart or lung disease, or diabetes, are at higher risk for getting very sick from Covid-19.

Shingles

An older adult with shingles is more likely to experience pain from postherpetic neuralgia (nerve pain).

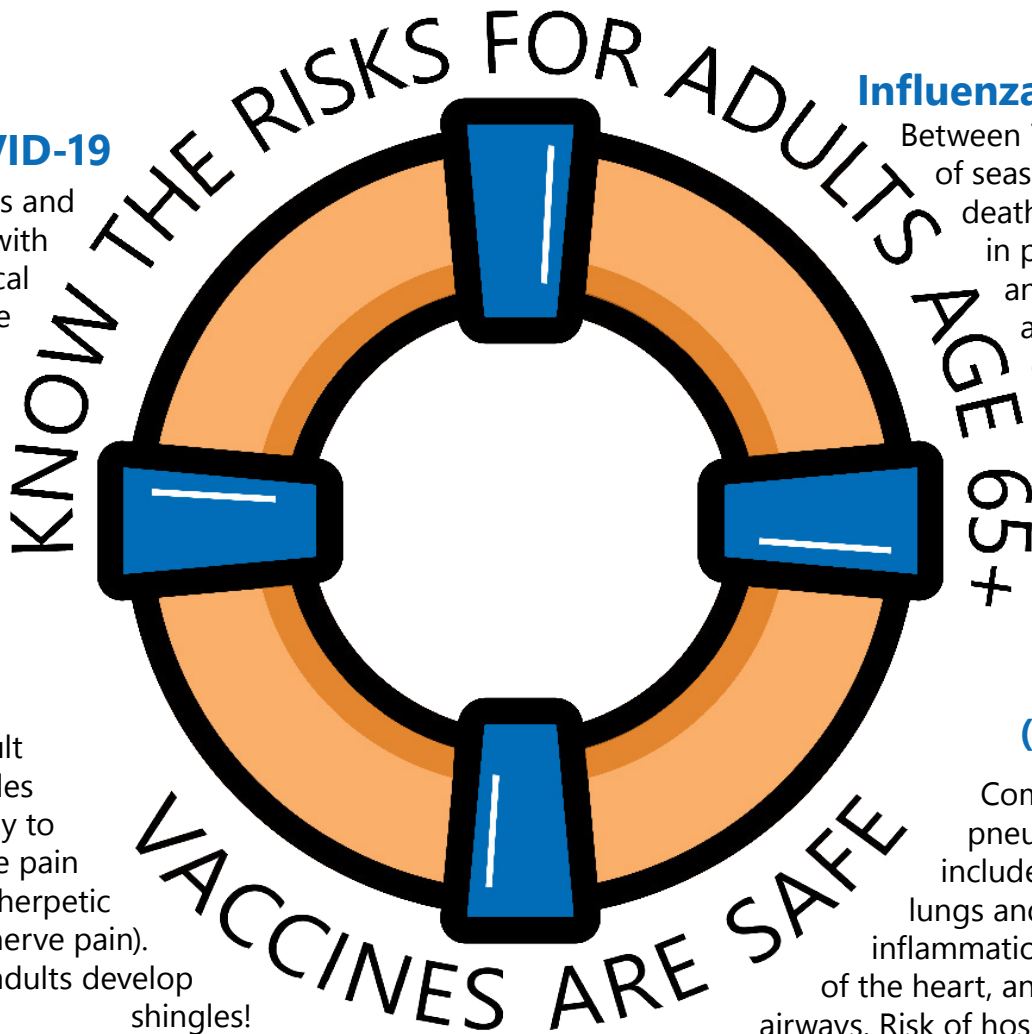
1 in 3 adults develop shingles!

Influenza (Flu)

Between 70% and 85% of seasonal flu related deaths have occurred in people 65 years and older. Older adults have a 6x greater risk of dying from flu and related complications.

Pneumococcal Disease (Pneumonia)

Complications of pneumococcal disease include infection in the lungs and chest cavity, inflammation of the lining of the heart, and blockage of airways. Risk of hospitalization for pneumococcal pneumonia is more than 6 x greater in older adults.



[Respiratory Virus Guidance | CDC](#)



[Flu & People 65 Years and Older | CDC](#)



[Complications of Shingles \(Herpes Zoster\) | CDC](#)



[Symptoms and Complications of Pneumococcal Disease | CDC](#)



[Recommended Adult Immunization Schedule | CDC](#)