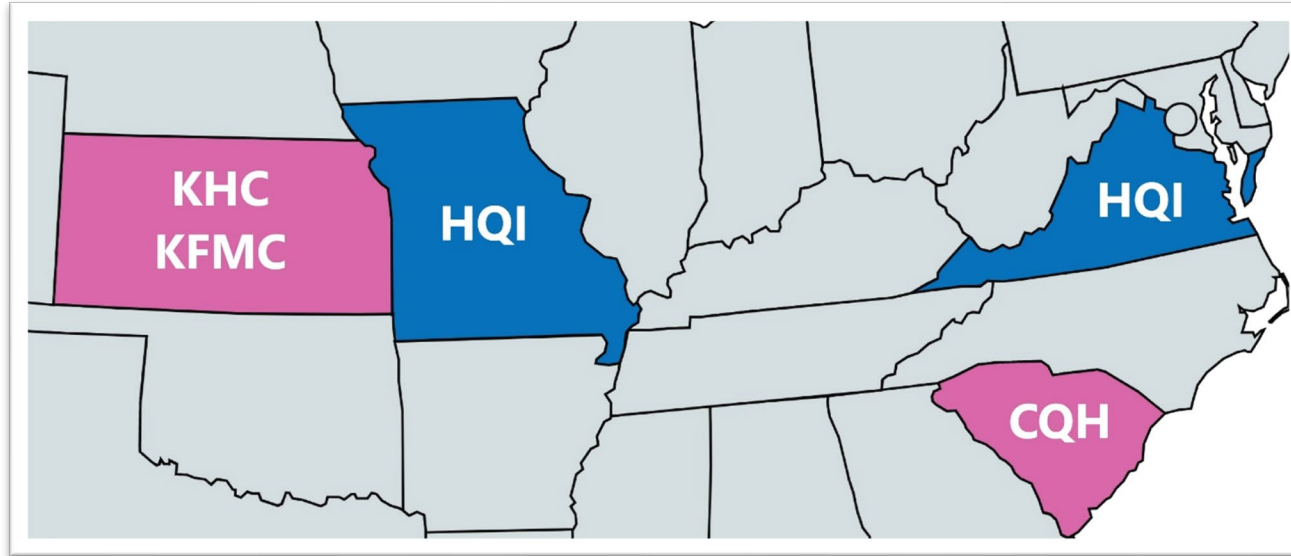




Health Quality Innovation Network



Health Quality Innovation Network



Logistics – Zoom Meeting



To ask questions, click on the **Chat** icon.

Raise your hand if you want to verbally ask a question.

Resources from today's session will be posted in **Chat**.

You may adjust your audio by clicking the caret next to the **Mute** icon.

Today's Presenters



Julie Richards has worked in infection control since 2013. She has been an RN for more than 28 years and holds CIC certification and Fellow designation with APIC. She is a published author and has shared her expertise at local and national events. She has served on the Greater KC APIC Board for more than seven years, including as president in 2020. She has contributed to the National APIC Public Policy Committee and was awarded the APIC Leaders Award in 2019.



DeAnn Richards has worked in infection prevention and occupational health for more than 30 years. She is certified in infection control, long-term care infection control, healthcare quality, and patient safety. While she began her healthcare career in long-term care, DeAnn has worked in multiple settings. She has held WI chapter leader positions, is a past APIC membership engagement chair and is an APIC faculty member.

Infection Prevention and Control Office Hours

Respiratory Virus Season Personal Protective Equipment (PPE)

Presented by: Julie M. Richards, MSN, RN, CIC, FAPIC

October 2, 2024



Health Quality Innovation Network



Objectives

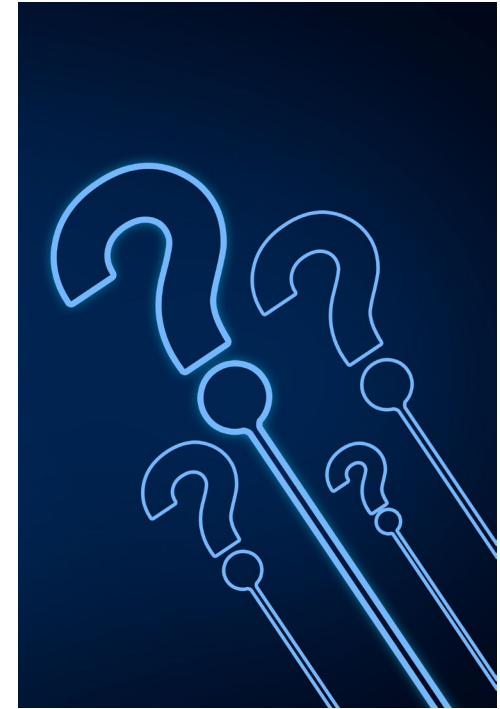
- Recognize how PPE aids in the safety of healthcare workers, residents and visitors and minimizes respiratory pathogen spread
- Address considerations for PPE selection based on tasks and respiratory pathogen community and facility spread
- Ask questions of the subject matter experts to clarify individual and facility understanding of best practices



Polling Question

When was the last PPE observed/skills-check performed with HCWs in your facility?

- A. Within the past three months
- B. Within the past six months
- C. Within the past year
- D. Greater than a year



What is PPE?

PPE refers to a variety of barriers used alone or in combination to protect mucous membranes, airways, skin and clothing from contact with infectious agents (germs).

Select PPE based on the nature of the resident contact and/or the likely mode(s) of transmission.



PPE for Respiratory Viruses



Gloves



Gown



Mask



Respirator (e.g., N95)



Eye protection

Prevent COVID-19 Spread with PPE

HCWs who enter the room of a resident with signs or symptoms of an unknown respiratory viral infection that is consistent with SARS-CoV-2 infection should adhere to standard precautions **AND**

- NIOSH-approved particulate respiratory with an N95 filter or higher
- Gown
- Gloves
- Eye protection

PPE can be adjusted once the cause of the infection is identified



Knowledge Check

What should you do?

While providing care to a resident who is positive with COVID-19, the top strap on your N95 snaps and breaks. You are almost done providing the resident's care, but you still have a few more tasks.

PPE Resources

- Ensure that PPE is always readily available to assist the HCW in adhering to recommended IPC practices – this support is crucial for their safety and well-being
- Plan for situations (e.g., multiple symptomatic individuals) requiring increased supplies
- Be prepared if the spread of respiratory viruses increases in the community – this may increase mask usage in the facility
- Respirators (N95) use may increase – different sizes and models may be needed

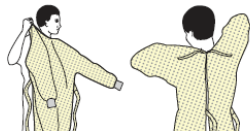


SEQUENCE FOR PUTTING ON PERSONAL PROTECTIVE EQUIPMENT (PPE)

The type of PPE used will vary based on the level of precautions required, such as standard and contact, droplet or airborne infection isolation precautions. The procedure for putting on and removing PPE should be tailored to the specific type of PPE.

1. GOWN

- Fully cover torso from neck to knees, arms to end of wrists, and wrap around the back
- Fasten in back of neck and waist



2. MASK OR RESPIRATOR

- Secure ties or elastic bands at middle of head and neck
- Fit flexible band to nose bridge
- Fit snug to face and below chin
- Fit-check respirator



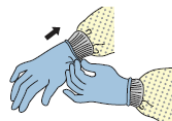
3. GOGGLES OR FACE SHIELD

- Place over face and eyes and adjust to fit



4. GLOVES

- Extend to cover wrist of isolation gown



USE SAFE WORK PRACTICES TO PROTECT YOURSELF AND LIMIT THE SPREAD OF CONTAMINATION

- Keep hands away from face
- Limit surfaces touched
- Change gloves when torn or heavily contaminated
- Perform hand hygiene

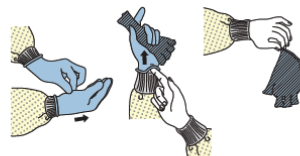


HOW TO SAFELY REMOVE PERSONAL PROTECTIVE EQUIPMENT (PPE) EXAMPLE 1

There are a variety of ways to safely remove PPE without contaminating your clothing, skin, or mucous membranes with potentially infectious materials. Here is one example. **Remove all PPE before exiting the patient room** except a respirator, if worn. Remove the respirator **after** leaving the patient room and closing the door. Remove PPE in the following sequence:

1. GLOVES

- Outside of gloves are contaminated!
- If your hands get contaminated during glove removal, immediately wash your hands or use an alcohol-based hand sanitizer
- Using a gloved hand, grasp the palm area of the other gloved hand and peel off first glove
- Hold removed glove in gloved hand
- Slide fingers of ungloved hand under remaining glove at wrist and peel off second glove over first glove
- Discard gloves in a waste container



2. GOGGLES OR FACE SHIELD

- Outside of goggles or face shield are contaminated!
- If your hands get contaminated during goggle or face shield removal, immediately wash your hands or use an alcohol-based hand sanitizer
- Remove goggles or face shield from the back by lifting head band or ear pieces
- If the item is reusable, place in designated receptacle for reprocessing. Otherwise, discard in a waste container



3. GOWN

- Gown front and sleeves are contaminated!
- If your hands get contaminated during gown removal, immediately wash your hands or use an alcohol-based hand sanitizer
- Unfasten gown ties, taking care that sleeves don't contact your body when reaching for ties
- Pull gown away from neck and shoulders, touching inside of gown only
- Turn gown inside out
- Fold or roll into a bundle and discard in a waste container

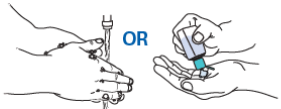


4. MASK OR RESPIRATOR

- Front of mask/respirator is contaminated — DO NOT TOUCH!
- If your hands get contaminated during mask/respirator removal, immediately wash your hands or use an alcohol-based hand sanitizer
- Grasp bottom ties or elastics of the mask/respirator, then the ones at the top, and remove without touching the front
- Discard in a waste container



5. WASH HANDS OR USE AN ALCOHOL-BASED HAND SANITIZER IMMEDIATELY AFTER REMOVING ALL PPE



PERFORM HAND HYGIENE BETWEEN STEPS IF HANDS BECOME CONTAMINATED AND IMMEDIATELY AFTER REMOVING ALL PPE



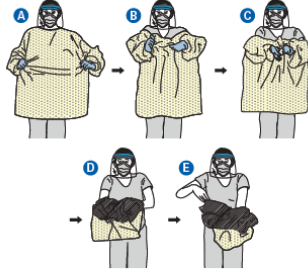
CE020472-0

HOW TO SAFELY REMOVE PERSONAL PROTECTIVE EQUIPMENT (PPE) EXAMPLE 2

Here is another way to safely remove PPE without contaminating your clothing, skin, or mucous membranes with potentially infectious materials. **Remove all PPE before exiting the patient room** except a respirator, if worn. Remove the respirator **after** leaving the patient room and closing the door. Remove PPE in the following sequence:

1. GOWN AND GLOVES

- Gown front and sleeves and the outside of gloves are contaminated!
- If your hands get contaminated during gown or glove removal, immediately wash your hands or use an alcohol-based hand sanitizer
- Grasp the gown in the front and pull away from your body so that the ties break, touching outside of gown only with gloved hands
- While removing the gown, fold or roll the gown inside-out into a bundle
- As you are removing the gown, peel off your gloves at the same time, only touching the inside of the gloves and gown with your bare hands. Place the gown and gloves into a waste container



2. GOGGLES OR FACE SHIELD

- Outside of goggles or face shield are contaminated!
- If your hands get contaminated during goggle or face shield removal, immediately wash your hands or use an alcohol-based hand sanitizer
- Remove goggles or face shield from the back by lifting head band and without touching the front of the goggles or face shield
- If the item is reusable, place in designated receptacle for reprocessing. Otherwise, discard in a waste container

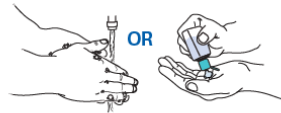


3. MASK OR RESPIRATOR

- Front of mask/respirator is contaminated — DO NOT TOUCH!
- If your hands get contaminated during mask/respirator removal, immediately wash your hands or use an alcohol-based hand sanitizer
- Grasp bottom ties or elastics of the mask/respirator, then the ones at the top, and remove without touching the front
- Discard in a waste container



4. WASH HANDS OR USE AN ALCOHOL-BASED HAND SANITIZER IMMEDIATELY AFTER REMOVING ALL PPE



PERFORM HAND HYGIENE BETWEEN STEPS IF HANDS
BECOME CONTAMINATED AND IMMEDIATELY AFTER
REMOVING ALL PPE



CE050672-6

Appendix A: Figure. Example of Safe Donning and Removal of Personal Protective Equipment (PPE)

COVID-19 PPE Supplies & Equipment

- Gloves
- Gowns
- Eye protection
- Respirator (e.g., N95)
- Disinfectant wipes
- Hand sanitizer
- Trash bin
- Precautions signage
- PPE storage container



Resources

- **CDC Sequence for Putting on/Removing PPE:** <https://www.cdc.gov/infection-control/media/pdfs/Toolkits-PPE-Sequence-P.pdf>
- **CDC/NIOSH User Seal Check:** <https://www.cdc.gov/niosh/docs/2018-130/pdfs/2018-130.pdf>
- **CDC Respirator On and Off:** <https://archive.cdc.gov/#/details?url=https://www.cdc.gov/coronavirus/2019-ncov/downloads/hcp/fs-respirator-on-off.pdf>
- **HQIN PPE Best Practices Pocket Cards:** <https://hqin.org/wp-content/uploads/2022/12/Personal-Protective-Equipment-Three-Card.pdf>
- **HQIN Visitation Guidance Poster:** https://hqin.org/wp-content/uploads/2023/10/Visitation-Guidance-Poster_Updated-10.2023.pdf
- **HQIN Masking Matters Flyer:** https://hqin.org/wp-content/uploads/2024/06/Masking-Matters_rev.6.2024.pdf
- **HQIN Hand Hygiene, PPE and Isolation Slides and Recording:** <https://hqin.org/resource/hand-hygiene-personal-protective-equipment-isolation-slides/>

Resources, continued

- **HQIN Safe Visitation in Nursing Homes:** https://hqin.org/wp-content/uploads/2022/10/Safe-Visitation-in-Nursing-Homes_rev05.30.23.pdf
- **HQIN PPE Competency Evaluation:** <https://spice.unc.edu/wp-content/uploads/2017/03/PPE-Competency-SPICE.pdf>
- **HQIN Simple Strategies for PPE:** https://hqin.org/wp-content/uploads/2020/05/Simple-Strategies-Personal-Protective-Equipment_508.pdf
- **CDC Understanding the Difference - Surgical Mask vs. N95:** <https://www.cdc.gov/niosh/npptl/pdfs/understanddifferenceinfographic-508.pdf>
- **NETEC Resource Library: Long-Term Care: PPE Education** https://repository.netecweb.org/files/theme_uploads/LTCPPEEducationFinalRev9.13.2021.pdf
- **NETEC Know Your PPE:** <https://repository.netecweb.org/files/original/8a4e0ca69136f087ca297dafa15d1760.pdf>
- **CDC Project Firstline Masking Poster:** <https://www.cdc.gov/project-firstline/media/pdfs/masking-sign-5-ltc-508.pdf>
- **CDC Project Firstline Please Wear a Mask Poster:** <https://www.cdc.gov/project-firstline/media/pdfs/masking-sign-4-ltc-508.pdf>

References

- HQIN Checklist of Best Practices to Keep Infectious Diseases from Spreading in Nursing Homes: <https://hqin.org/resource/checklist-of-best-practices-to-keep-infectious-diseases-from-spreading-in-nursing-homes/>
- CDC Long-term care Facilities (LTCFs) Viral Respiratory Pathogens Toolkit for Nursing Homes: <https://www.cdc.gov/long-term-care-facilities/hcp/respiratory-virus-toolkit/index.html>
- Healthcare Infection Control Practices Advisory Committee, 2007 Guidelines for Isolation Precautions: Preventing Transmission of Infectious Agents in Healthcare Settings: <https://www.cdc.gov/infection-control/hcp/isolation-precautions/index.html>
- NETEC Long-term care PPE education: [https://repository.netecweb.org/files/theme_uploads/LTCPPEducationFinalRev9.13.2021.pdf](https://repository.netecweb.org/files/theme_uploads/LTCPPEEducationFinalRev9.13.2021.pdf)

Office Hours Q&A

To ask questions, click on the **Chat** icon.

Raise your hand if you would like to ask a question verbally.



Next Office Hours: October 9, 2024 Respiratory Outcome Surveillance and Quality Assurance and Performance Improvement (QAPI) Reporting

Registration link:

<https://apic.zoom.us/meeting/register/tZlpf--spzlrEtdncCiM2OvxvxZTvAA91UW6#/registration>

Today's Office Hours Evaluation link:

https://apic.qualtrics.com/jfe/form/SV_bPcgv6fGrWCBnhQ

CONNECT WITH US

Call 877.731.4746 or visit www.hqin.org



@HQINetwork

Health Quality Innovation Network

FOR MORE INFORMATION

Call 877.731.4746 or visit www.hqin.org

Mary Locklin, MSN, RN, CIC

Senior Quality Advisor, Infection Prevention

mlocklin@hqi.solutions